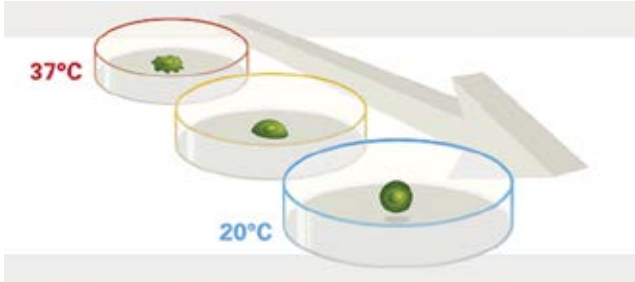
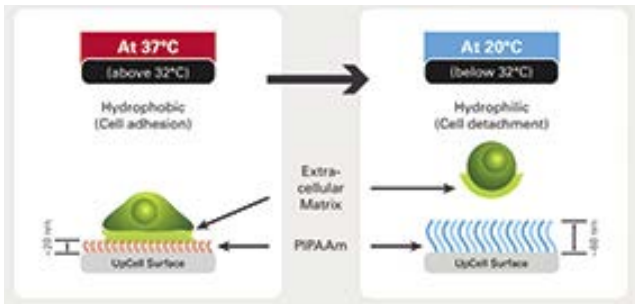


PETRI DISHES

CELL CULTURE

Thermo SCIENTIFIC nunc

UpCell Nunc™ Petri dishes



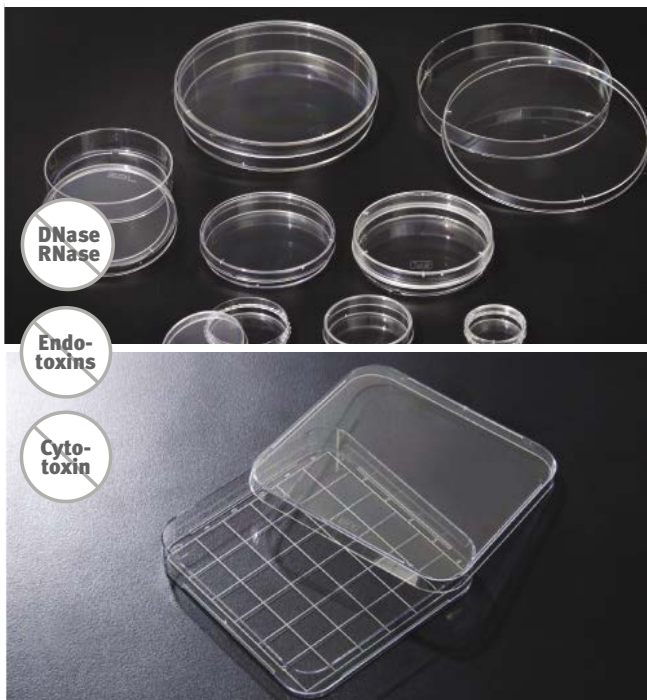
Designed to allow rapid dissociation of cells from the surface by simple temperature change.

- No trypsination: surface proteins and antigens preserved
- No use of scrapers: good cell viability
- Recovered cell layers can be stacked to create three-dimensional tissue models and co-cultures
- Minimal handling time
- 3 x 3 mm grid for harvesting single cells in suspension or small colonies

Cat. No.	ext Ø x ext. h (mm)	Specifications	Treatment	Units/bag	Units/carton	€ Excl. VAT/carton
Ø 35 mm						
056714	40 x 12	Supporting membrane supplied	Upcell	5	30	NC -
Ø 60 mm						
056713	60 x 15	-	Upcell	5	30	NC -
056716	60 x 15	Gridded	Upcell	5	30	NC -
Ø 100 mm						
056712	92 x 17	-	Upcell	1	6	NC -
056715	92 x 17	Gridded	Upcell	1	6	NC -

SPL SPL LIFE SCIENCES

Petri dishes treated SPL cell culture



- Made of high quality transparent polystyrene, USP class VI
- External grip: for a better grip
- Sterile SAL 10⁻⁶

Cat. No.	Ø int x h int. (mm)	Specifications	Treatment	Units/bag	Units/carton	€ Excl. VAT/carton
Ø 35 mm						
330005	35 x 9.6	Grip	TC	10	500	NC -
Ø 60 mm						
330006	52.8 x 12.8	Grip	TC	10	500	NC -
Ø 100 mm						
330007	86.26 x 17.70	-	TC	10	200	NC -
330008	87.48 x 16.40	Grip	TC	10	200	NC -
Ø 150 mm						
330009	138.57 x 23.3	-	TC	10	120	NC -
330010	138.57 x 15.4	-	TC	10	120	NC -

Square-shaped

- In transparent polystyrene
- Gridded bottom for colony counting

Cat. No.	Lx W x H (mm) ext.	Specifications	Treatment	Units/bag	Units/carton	€ Excl. VAT/carton
330045	126.40 x 126.4 x 20	Gridded	TC	5	60	NC -