

Membrane and blotting paper for proteins

Immobilon™ Transfer membranes

Immobilon-P (PVDF) transfer membranes

Made of polyvinylidene fluoride (PVDF) hydrophobic, optimised for binding proteins transferred from different types of gels.

- Ideal substrate for immunodetection
- Using the rapid protocol developed by Merck Millipore, time savings of 2 hours: elimination of the blocking step in a western blot, reduction of the number and duration of washes, without compromising specificity or sensitivity

| Cat.No. | Merck Millipore Cat. No. | Porosity (µm) | Prese-ntation | Dim. (mm) | Units/ carton | € Excl. VAT/ carton |
|---------|--------------------------|---------------|---------------|------------|---------------|---------------------|
| 044081 | IPVH07850 | 0,45 | Sheets | 70 x 84 | 50 | NC - |
| 044082 | IPVH304Fo | 0,45 | Sheets | 260 x 260 | 10 | NC - |
| 044083 | IPVH09120 | 0,45 | Sheets | 90 x 120 | 10 | NC - |
| 044084 | IPVH10100 | 0,45 | Sheets | 100 x 100 | 10 | NC - |
| 044085 | IPVH20200 | 0,45 | Sheets | 200 x 200 | 10 | NC - |
| 044086 | IPVH15150 | 0,45 | Sheets | 150 x 150 | 10 | NC - |
| 044087 | IPVH00010 | 0,45 | Roll | 265 x 3750 | 1 | NC - |

Immobilon-PSQ (PVDF) transfer membranes

Made of polyvinylidene fluoride (PVDF) for the transfer of low molecular weight proteins.

Immobilon-PSQ membranes: for blotting of < 20 kD proteins

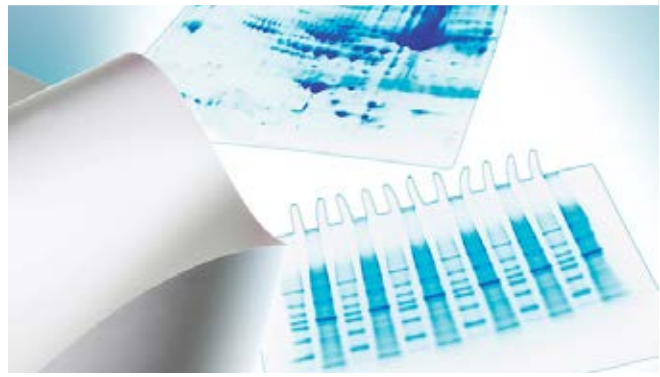
- High yields in protein sequencing
- No surfactant

| Cat.No. | Merck Millipore Cat. No. | Porosity (µm) | Prese-ntation | Dim. (mm) | Units/ carton | € Excl. VAT/ carton |
|---------|--------------------------|---------------|---------------|------------|---------------|---------------------|
| 044088 | ISEQ00010 | 0,2 | Roll | 265 x 3750 | 1 | NC - |
| 044089 | ISEQ15150 | 0,2 | Sheets | 150 x 150 | 10 | NC - |
| 044090 | ISEQ101000 | 0,2 | Sheets | 100 x 100 | 10 | NC - |
| 044091 | ISEQ20200 | 0,2 | Sheets | 200 x 200 | 10 | NC - |
| 044092 | ISEQ26260 | 0,2 | Sheets | 260 x 260 | 10 | NC - |

Immobilon-E (PVDF) transfer membranes

- Do not require a methanol membrane activation step
- Better protein retention and durability than nitrocellulose membranes
- Can be moistened directly with transfer buffer
- Compatible detection methods: chemiluminescence, chromogenic and radioactivity
- Compatible with Coomassie Blue, Ponceau-S Red, Sypro Ruby and colloidal gold dyes
- Membranes Cat. No. 044435 and 044436 are supplied with blotting paper sheets

| Cat.No. | Merck Millipore Cat. No. | Porosity (µm) | Prese-ntation | Dim. (mm) | Units/ carton | € Excl. VAT/ carton |
|---------|--------------------------|---------------|---------------|------------|---------------|---------------------|
| 044430 | IEVH00005 | 0.45 | Roll | 265 x 1875 | 1 | NC - |
| 044431 | IEVH07850 | 0.45 | Sheets | 70 x 84 | 50 | NC - |
| 044432 | IEVH08100 | 0.45 | Sheets | 80 x 100 | 10 | NC - |
| 044433 | IEVH09120 | 0.45 | Sheets | 90 x 120 | 10 | NC - |
| 044434 | IEVH10100 | 0.45 | Sheets | 100 x 100 | 10 | NC - |
| 044435 | IESN07852 | 0.45 | Sheets | 70 x 84 | 20 | NC - |
| 044436 | IESN08132 | 0.45 | Sheets | 85 x 135 | 20 | NC - |
| 044437 | IEVH07804 | 0.45 | Sheets | 70 x 84 | 4 | NC - |



Immobilon™-Ny+ transfer membranes

MERCK

For greater sensitivity during re-hybridisation.

Immobilon-Ny+ membranes optimised for reliable and reproducible transfer, immobilisation, hybridisation and rehybridisation.

| Cat.No. | Merck Millipore Cat. No. | Porosity (µm) | Prese-ntation | Dim. (mm) | Units/ carton | € Excl. VAT/ carton |
|---------|--------------------------|---------------|---------------|------------|---------------|---------------------|
| 044067 | INYC00010 | 0,45 | Roll | 300 x 3300 | 1 | NC - |

Immobilon-FL (PVDF) transfer membranes

Optimised for applications with fluorescence detection

- Same fixation characteristics as Immobilon-P (PVDF, 0.45 µm)
- Very low background noise in fluorescence detection in western blotting
- Compatible with the most commonly used fluorescence reagents
- Compatible with non-fluorescent detection reagents

| Cat.No. | Merck Millipore Cat. No. | Porosity (µm) | Prese-ntation | Dim. (mm) | Units/ carton | € Excl. VAT/ carton |
|---------|--------------------------|---------------|---------------|------------|---------------|---------------------|
| 051587 | IPFL10100 | 0,45 | Sheets | 100 x 100 | 10 | NC - |
| 051588 | IPFL20200 | 0,45 | Sheets | 200 x 200 | 10 | NC - |
| 051589 | IPFL00010 | 0,45 | Roll | 265 x 3750 | 1 | NC - |

Immobilon Sandwiches (PVDF) Transfer Membranes

- Pre-cut
- Supplied with buffer, separators and absorbent sheets
- Compatible with pre-cast gels

| Cat.No. | Merck Millipore Cat. No. | Porosity (µm) | Prese-ntation | Dim. (mm) | Units/ carton | € Excl. VAT/ carton |
|---------|--------------------------|---------------|---------------|-----------|---------------|---------------------|
| 051590 | IPSN07852 | 0,45 | Sheets | 70 x 84 | 20 | NC - |
| 051591 | IPSN08132 | 0,45 | Sheets | 85 x 135 | 20 | NC - |

Immobilon-NC transfer membranes (cellulose esters)

Immobilon-NC HAHY membranes made of cellulose esters with surfactants, which improves their wettability and facilitates their handling during the transfer process.

| Cat.No. | Merck Millipore Cat. No. | Porosity (µm) | Prese-ntation | Dim. (mm) | Units/ carton | € Excl. VAT/ carton |
|---------|--------------------------|---------------|---------------|------------|---------------|---------------------|
| 044055 | HATC00010 | 0,45 | Roll | 330 x 3000 | 1 | NC - |