

Eppendorf micropipettes

Model	Eppendorf Research® plus	Eppendorf Reference® 2	Eppendorf Xplorer®/ Eppendorf Xplorer® plus	Eppendorf Research® plus Move It®/ Eppendorf Xplorer® plus Move It®
Operating mode	Manual	Manual	Electronic	Manual / Electronic
Adjustable spacing between tips	No	No	No	Yes
Highlights	Lightweight, low pipetting force	Single button operation	Efficient and accurate automated pipetting	Variable tip spacing for transfer between different formats
Volume range	0.1 µl - 10 ml	0.1 µl - 10 ml	0.5 µl - 10 ml	1 - 1,200 µl
Available options	1 channel, 8 channel, 12 channel, 16 channel, 24 channel	1 channel, 8 channel, 12 channel	1 channel, 8 channels, 12 channel, 16 channel, 24 channel	4 channel, 6 channel, 8 channel, 12 channel
RFID tracking	Yes	Yes	Yes	Yes
Autoclavable parts	Entirely	Entirely	Lower part	Lower part

Eppendorf Research® plus Micropipettes

- ▶ **Lightweight pipette, minimises handling forces without reducing robustness**
 - ▶ **Tip-holder end with shock absorber reduces tip attachment forces to reduce muscle strain**
 - ▶ **Highly flexible piston for minimum effort during handling and strong to minimise wear**
 - ▶ **Clip-on disassembly/assembly system for easy maintenance**
 - ▶ **Integrated RFID chip provides simple identification and documentation**
 - ▶ **Fully autoclavable without disassembly**
- ▶ **2 versions:**
- ▶ **GLP (General Lab Product), for all applications other than human diagnosis**
 - ▶ **CE/IVD, for human clinical applications (human diagnosis)**

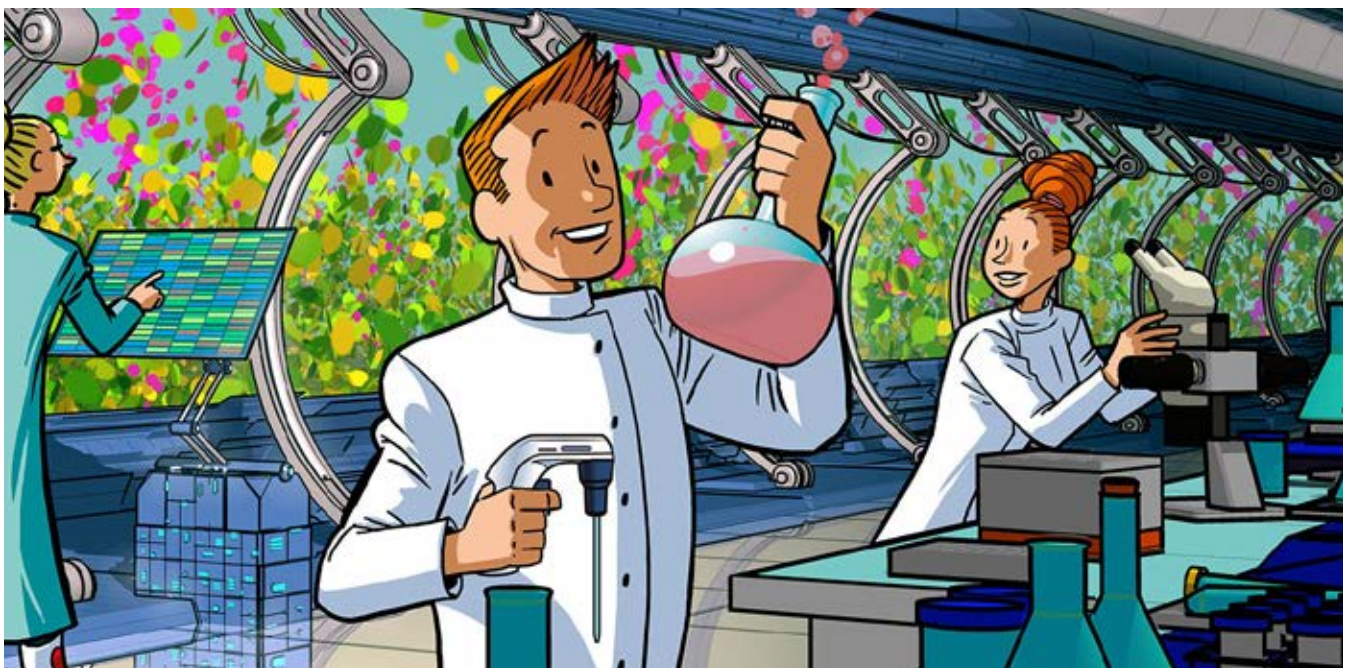


Eppendorf Research® plus Micropipettes - variable volume

Volume (µl)	Colour push button	Research® plus GLP		Research® plus CE/IVD	
		Cat. No.	€ Excl. VAT	Cat. No.	€ Excl. VAT
0.1 - 2.5	Anthracite	933953	NC -	035602	NC -
0.5 - 10	Grey	933954	NC -	035603	NC -
2 - 20	Light grey	933961	NC -	035610	NC -
2 - 20	Yellow	933955	NC -	035604	NC -
10 - 100	Yellow	933956	NC -	035605	NC -
20 - 200	Yellow	933957	NC -	035606	NC -
30 - 300	Orange	933962	NC -	035611	NC -
100 - 1,000	Blue	933958	NC -	035607	NC -
250 - 2500	Red	934304	NC -	934303	NC -
500 - 5,000	Violet	933959	NC -	035608	NC -
1,000 - 10,000	Turquoise	933960	NC -	035609	NC -

Also available in fixed volume, find them on www.dulis.nl

TIP
Eppendorf racks : See page 488



Indicative prices. Visit www.dulis.nl

TIPS
MICROPIPETTES