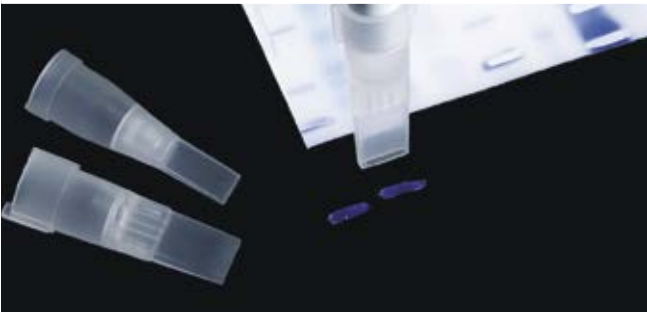


## Accessories

### Suction tips for electrophoresis gel strips



- ▶ No need for a scalpel, one-handed operation
- ▶ Autoclavable
- ▶ Press the button to lower the gel and the tip
- ▶ Avoid cross-contamination
- ▶ Compatible with all 1000 µl pipettes (Eppendorf, Gilson)

DNase  
RNase

Cat. No.	Dimensions (mm)	Units/bag	€ Excl. VAT/bag
999068	4 x 1	250	NC -
999070	6,5 x 1	250	NC -

### Scalpel for agarose gels



- ▶ To select and section DNA or RNA strips on agarose gels
- ▶ In single-use polystyrene
- ▶ Prevents damage to transilluminator displays
- ▶ L x W : 154 x 13 mm
- ▶ Packaged in bags of 10

Cat. No.	Description	€ Excl. VAT 10 units
o86667B	Scalpel for agarose gels	NC -

