

## Detection and blocking

### cytiva Cytiva Amersham AlkPhos Direct™ direct marking and detection systems

Technique based on direct labelling of DNA or RNA probes with a thermostable alkaline phosphatase. This labelled probe is then hybridised to the target.

- Detection possible by CDP-Star or ECF
- 2 to 3 hours reduction compared to conventional indirect methods

Cat. No.	Description	Membrane Area	€ Excl. VAT
RPN3680	Alkphos direct labeling module	2500 cm <sup>2</sup>	NC -
RPN3682	CDP-star detection reagent	2500 cm <sup>2</sup>	NC -
RPN3685	ECF detection module	2500 cm <sup>2</sup>	NC -
RPN3688	Alkphos direct hybridisation buffer	5000 cm <sup>2</sup>	NC -

### cytiva ECL Plex GaM IgG



Consult us for secondary HRP-conjugated antibodies



Cat. No.	Description	€ Excl. VAT
PA45009	ECL Plex GaM IgG, CY5, 150 µg	NC -
PA45011	ECL Plex GaR IgG, CY5, 150 µg	NC -
PA43009	ECL Plex GaM IgG, CY3, 150 µg	NC -
28-9011-06	ECL Plex GaR IgG Cy3 150 µg	NC -

### cytiva HRP conjugated Anti-rabbit IgG, F(ab')<sub>2</sub> Antibodies

- Applications : Western blot
- Storage : 2 - 8 °C
- Revelation: ECL

Cat.No.	Description	Volume (ml)	€ Excl. VAT
NA9340-1ML	HRP conjugated Anti-rabbit IgG F(ab') <sub>2</sub>	1	NC -

### Blu-Blot HS and Blu-Lite UHC autoradiography films



- High quality with blue background
- For use with calcium tungstate or blue emitting screens
- Compatible with manual and automatic development methods
- The UHC version offers higher contrast and sensitivity with low noise

Cat.No.	Version	Dimensions L x W (mm)	Units/carton	€ Excl. VAT/carton
062632	Blu-Blot HS	127 x 178	100	NC -
062633	Blu-Blot HS	203 x 254	100	NC -
062666	Blu-Lite UHC	127 x 178	100	NC -
062667	Blu-Lite UHC	203 x 254	100	NC -

### "Blue devil" autoradiography films

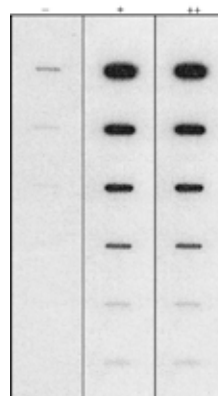


- Blue background
- Single emulsion
- With intersheets
- Exceptional clarity and low background noise
- For use with <sup>14</sup>C, <sup>35</sup>S, <sup>32</sup>P et <sup>125</sup>I
- Blotting
- Sequencing
- Chemiluminescence Autoradiography
- Shift gel analysis



Cat. No.	W x L (cm)	€ Excl. VAT / 100 units
789173	12.7 x 17.78	NC -
789174	20.32 x 25.4	NC -
789175	25.4 x 30.48	NC -
789176	35.56 x 43.18	NC -

### Amersham Hyperscreen Intensification Screens



- minus Hyperscreen  
+ plus Hyperscreen  
++ plus Hyperscreen and preflashed with Sensitize Preflash Unit



<sup>125</sup>I-labeled IgG slot blots: doubling dilutions (100 nCi to 1.56 nCi) 2 h exposure to Hyperfilm MP.

For fast and highly sensitive results in the detection of <sup>32</sup>P and <sup>125</sup>I in Southern, Northern and Western blots. To be used with the pre-flash lamp.

Cat. No.	Dimensions	Units/carton	€ Excl. VAT/carton
RPN1662	18 x 24 cm	2	NC -