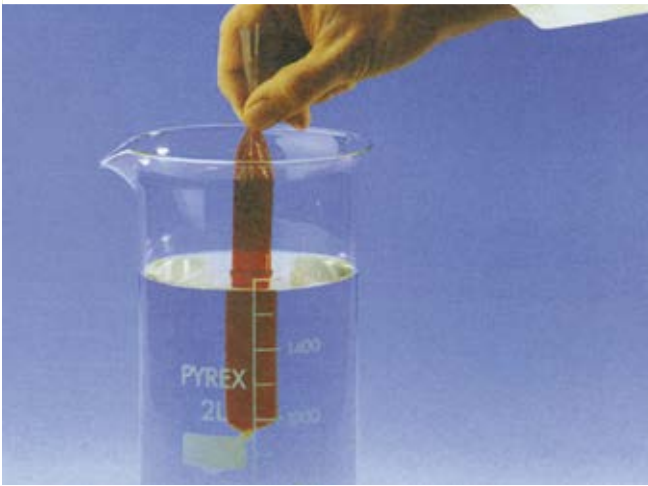


VISKING dialysis membranes



- Semi-permeable
- Supplied flat as seamless tubes
- In regenerated cellulose
- Cut-off point : 12000, 3500, 7000 daltons
- Ph range of use : 2 to 12

Cat. No.	Cut-off point	Ø (mm)	Width (mm)	V/L (ml/cm)	Length (m)	€ the roll
072002	12000	14.3	24 - 26	1.61	30	NC -
072003	12000	15.9	25 - 27	1.99	30	NC -
072004	12000	17.5	29 - 31	2.41	30	NC -
072005	12000	19	31 - 33	2.84	30	NC -
072006	12000	21.5	32 - 34	3.63	30	NC -
072007	12000	23.8	39 - 41	4.45	30	NC -
072008	12000	25.4	42 - 44	5.07	30	NC -
072009	12000	28.6	43 - 45	6.43	30	NC -
072001	12000	6.3	10	0.31	15	NC -
072010	12000	31.7	50 - 54	7.89	15	NC -
072011	12000	38.1	56 - 59	11.4	15	NC -
072012	12000	44.4	67 - 71	15.49	15	NC -
072013	12000	50.8	77 - 82	20.27	15	NC -
072015	12000	63.5	101 - 107	31.67	15	NC -
072016	12000	69.8	113 - 120	38.27	15	NC -
072017	12000	82.5	129 - 137	53.46	15	NC -
072018	12000	95.2	135 - 148	71.19	15	NC -

Cat. No.	Cut-off point	Ø (mm)	Width (mm)	V/L (ml/cm)	Length (m)	€ the roll
072019	12000	114.3	164 - 177	102.62	15	NC -
072020	12000	139.7	199 - 216	153.30	15	NC -
072023	3500	16	25	2.01	5	NC -
072024	3500	22	34	3.80	5	NC -
072025	3500	28	44	6.15	5	NC -
072026	3500	35	55	9.62	5	NC -
072027	7000	16	25	2.01	5	NC -
072028	7000	22	34	3.80	5	NC -
072029	7000	28	44	6.15	5	NC -
072030	7000	35	55	9.62	5	NC -

SPECTRA/POR membrane specification

Type	Biotech CR (regenerated cellulose)				Biotech EC (Cellulose esters)			
Appearance	See details below				Opaque, rigid			
Solvent resistance	Good				Medium			
Packaging	See details below				Wet with 0.1% sodium azide			
pH limits / Max temperature	2 to 12 / 60 °C				2 to 9 / 37 °C			
Biotech CR: details	Biotech CR 1	Biotech CR 2	Biotech CR 3	Biotech CR 4	Biotech CR 5	Biotech CR 6	Biotech CR 7	
Appearance	Transparent, flexible	Transparent, flexible	Transparent, flexible	Transparent, flexible	Thick, rigid	Transparent, flexible	Transparent, flexible	
Preservative	Glycerin	Glycerin	Glycerin	Glycerin	Glycerin	0.1 % azide sodium	0.1 % azide sodium	

SPECTRA/POR Float-A-Lyzer G2



Ready-to-use dialysis tubes.

- In 3 volumes : 1 ml, 5 ml and 10 ml
- With cellulose ester membrane for Biotech
- Easy to open and load
- Float on their own thanks to their cap
- Weighed down by a magnetic bar
- Delivered individually wrapped
- Kept wet with 0.1% sodium azide
- Ready to use after a simple rinse with water to remove sodium azide

➤ Applications

- Desalting
- Changing buffers
- Sample concentrations with the help of SPECTRA/GEL absorbent
- Protein Purification, DNA, oligonucleotides, peptides, polymers, antibodies or other biomolecules

SPECTRA/POR Float-A-Lyzer G2 - cellulose ester membrane

Cut-off point	1 ml	5 ml	10 ml
3.5 - 5 kDa	059341	059342	059343
8 to 10 kDa	059344	059345	059346
20 kDa	059347	059348	059349
100 kDa	059350	059351	059352
€/ 12 units	NC -	NC -	NC -

Volume	1 ml	5 ml	10 ml
Length (cm)	9	10	17
Membrane Ø (mm)	5	16	16
Cap Ø (mm)	36	36	36